
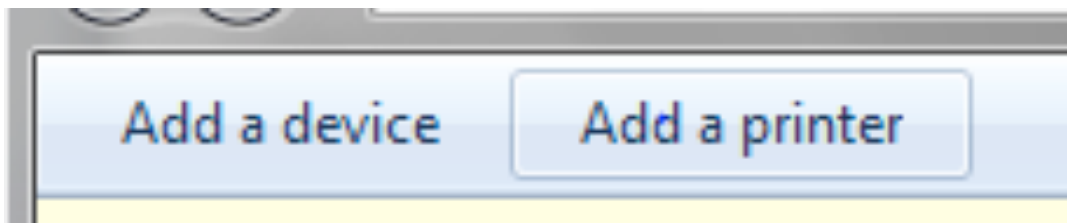


Add a Xerox Printer to your Computer on Windows 7

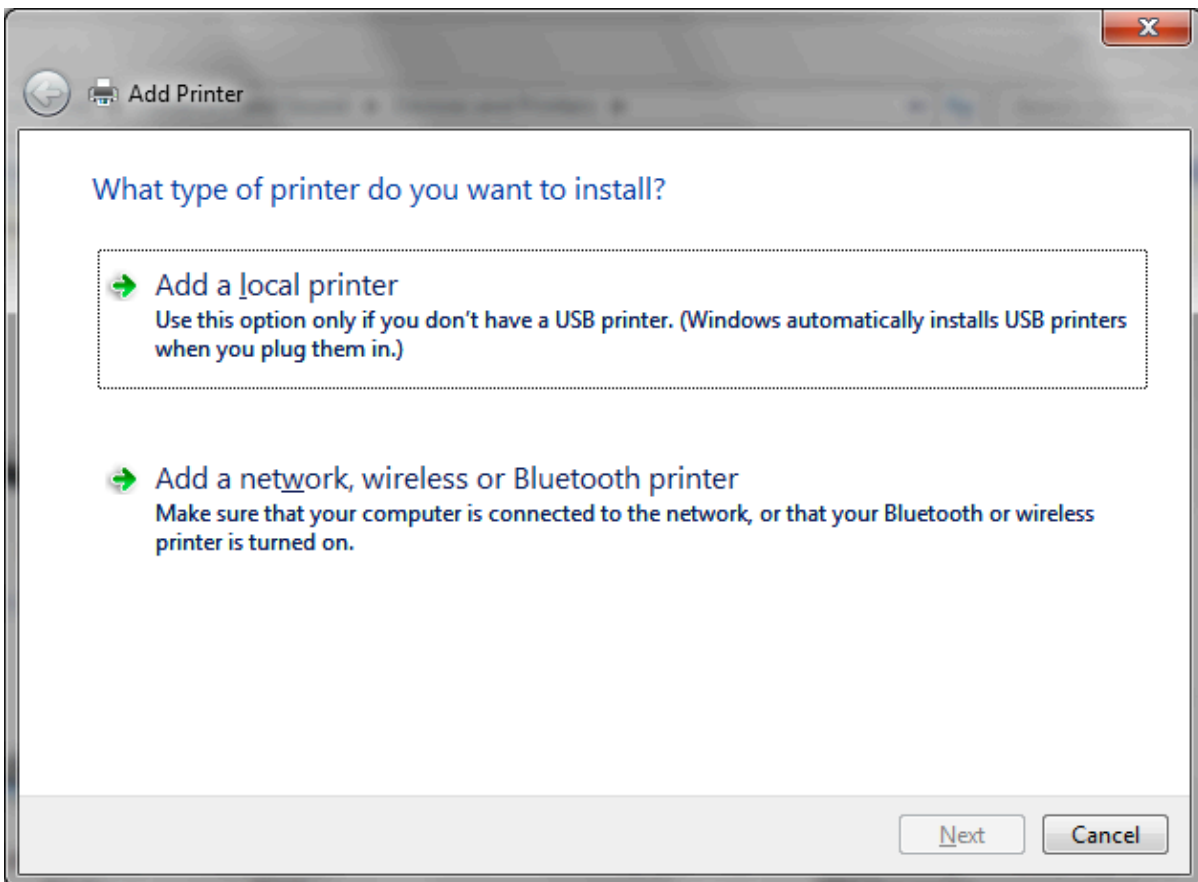
1. Click on **START** Button  on the lower left hand corner of computer screen.

2. Select **DEVICES AND PRINTERS**

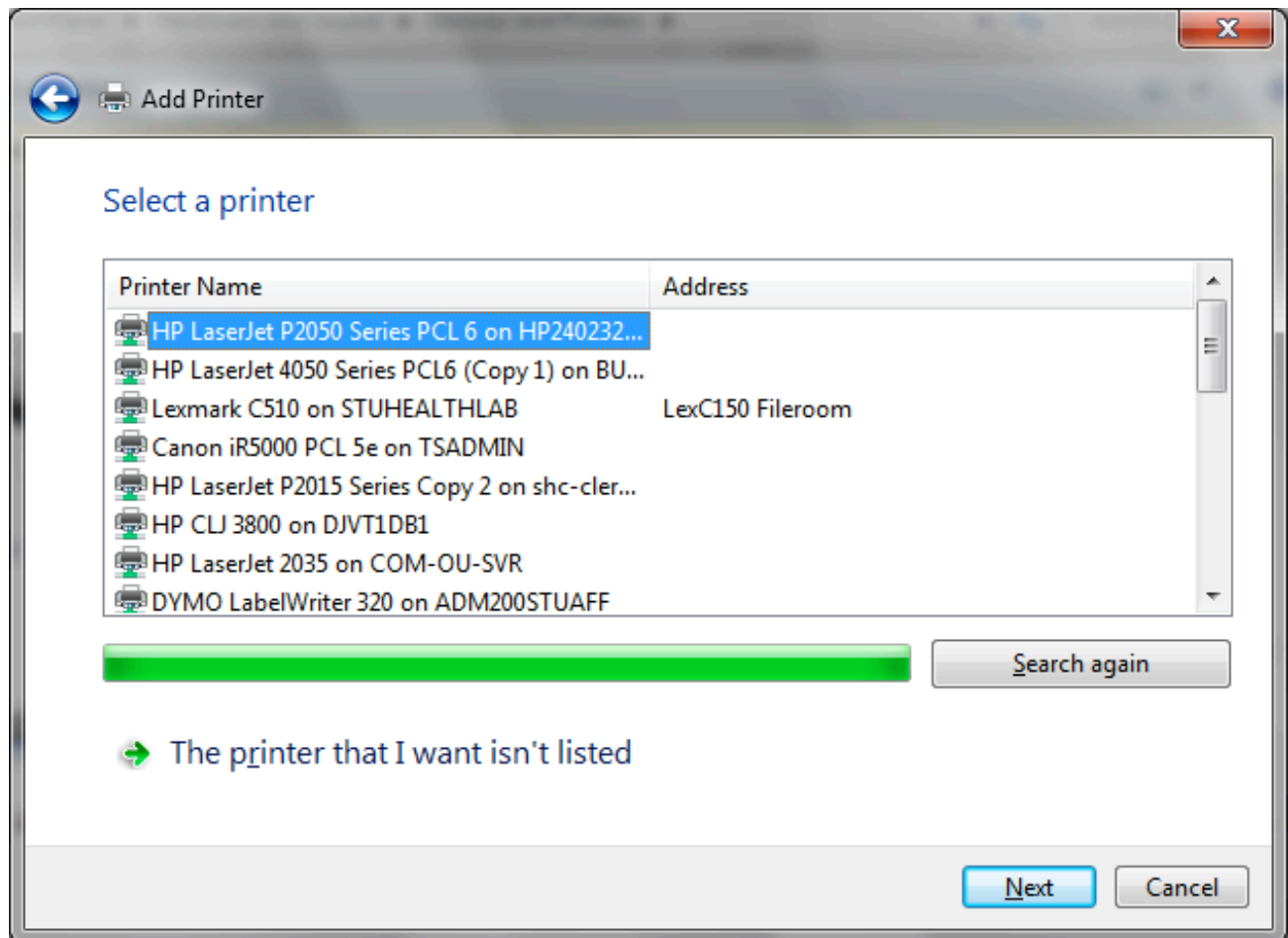
3. At top of **DEVICE AND PRINTER** window, Select **Add a printer**



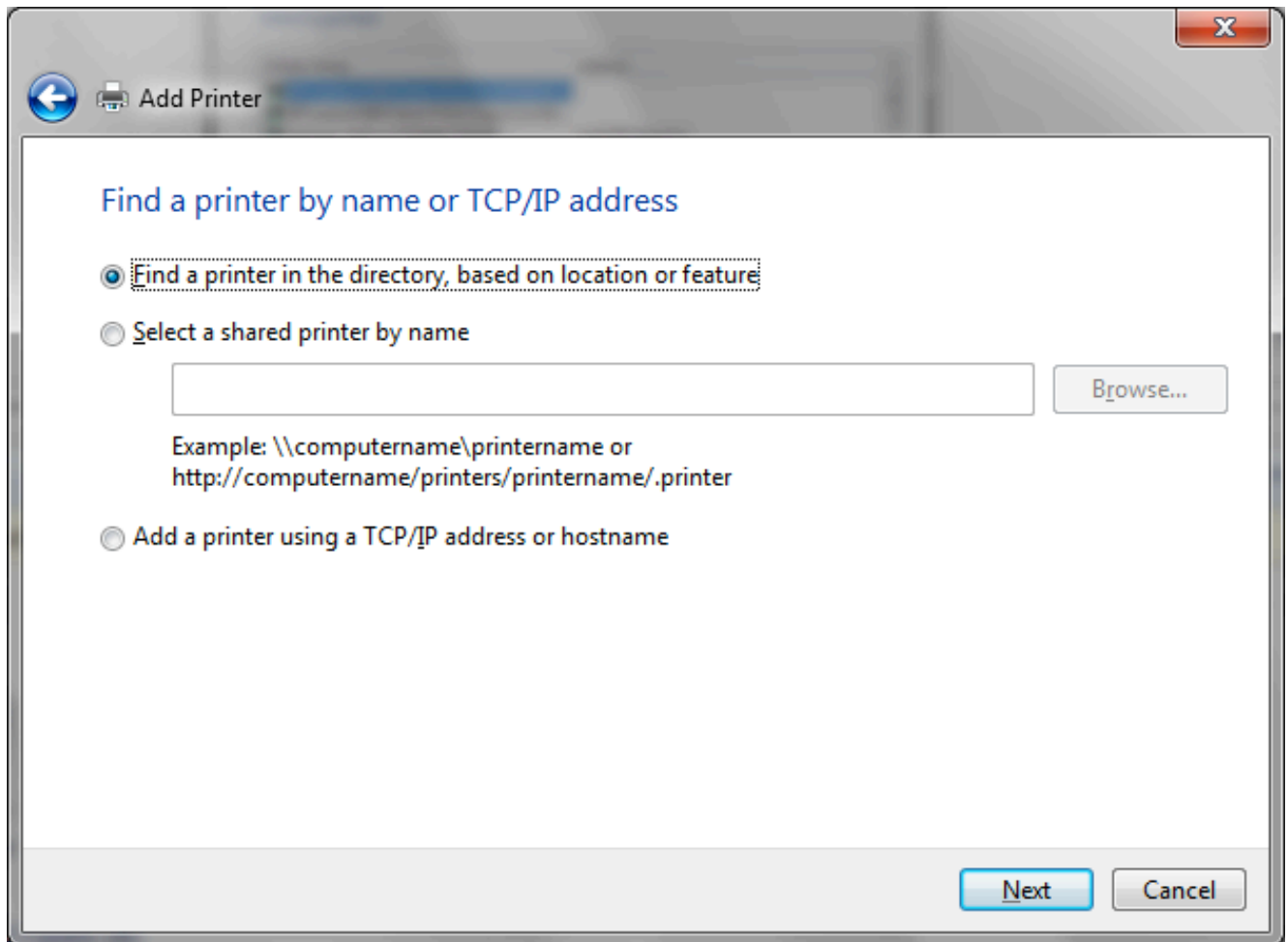
4. The Add printer Wizard should appear. Select **Add a network, wireless or Bluetooth printer.**



5. Next, select the printer to which you would like to print. If the printer that you want to print to is not listed, select the bottom option: **The printer that I want isn't listed**



6. On the next window you can stay with the default option, which is; **Find a printer in the directory, based on location or feature**. Select **NEXT** button.



7. Once the printer of your choice is located, **double-click** on the printer and it will be connected and set up on your local computer.

FOR ALL TECHNICAL/SUPER USERS

You can simply connect to printers via UNC path: [\\apinfpv1](#)

This will allow you to select the printer of choice. Simply **right-click** printer and select **CONNECT**