

Double Click on
HOWARD



Click on the network icon in the
lower right panel of your desktop.



Type in your **user name/ password** and press OK.



Windows Security

Network Authentication

Please enter user credentials

 User name


Password


OK Cancel


A red box highlights the entire dialog box. A red arrow points from the text 'user name/ password' in the top instruction to the 'User name' input field.









If you entered your credentials correctly, you should be connected.



Currently connected to: 

 **howardu.net**
Internet access

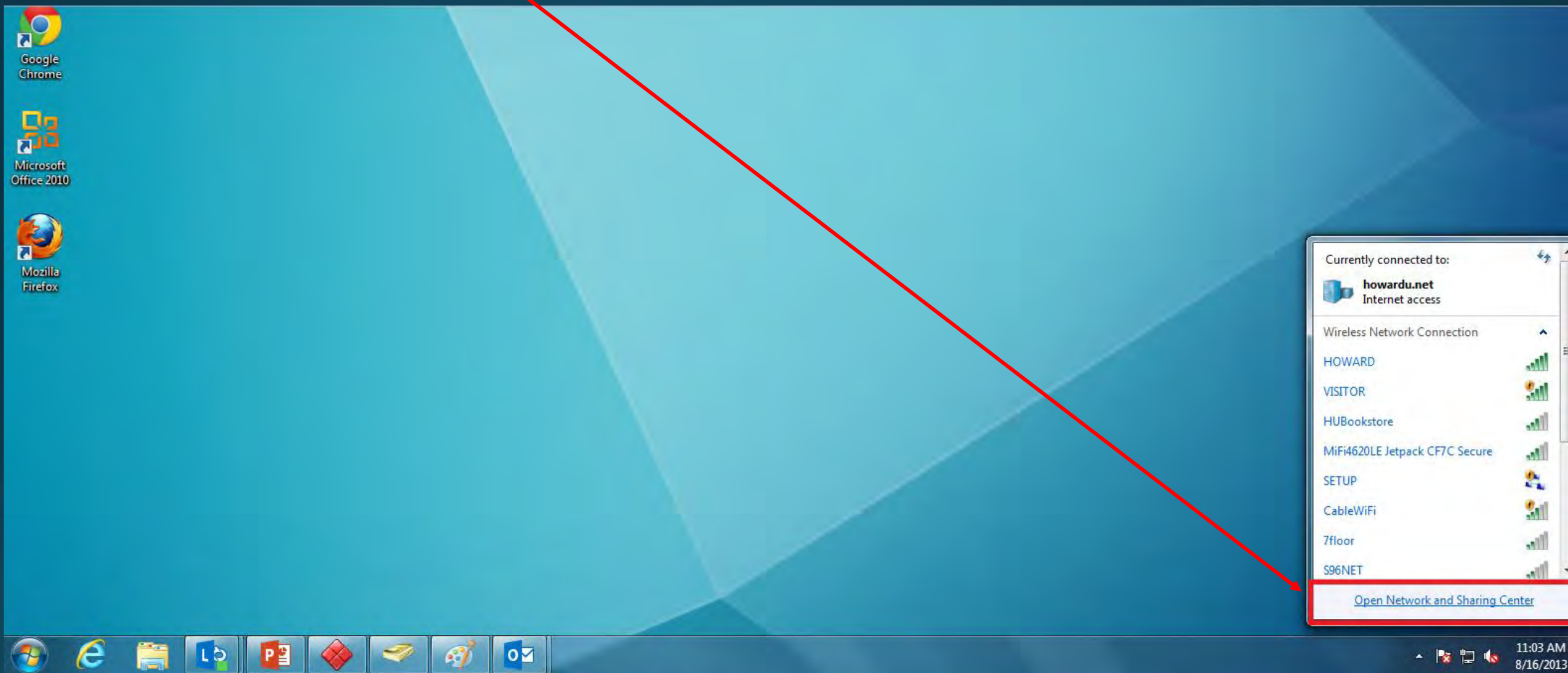
Wireless Network Connection 

HOWARD	Connected	
VISITOR		
HUBookstore		
SETUP		
xfinitywifi		
CableWiFi		
7floor		
S96NET		

[Open Network and Sharing Center](#)



If you are still experiencing issues connecting to the HOWARD network, try configuring your advanced settings and network properties like this:



Click **Manage Wireless Networks**

The screenshot shows the Windows 7 Network and Sharing Center window. The address bar indicates the path: Control Panel > Network and Internet > Network and Sharing Center. The left-hand navigation pane contains several links, with 'Manage wireless networks' highlighted by a red dashed box and a red arrow pointing to it from the top of the screen. Other links in the pane include 'Control Panel Home', 'Change adapter settings', and 'Change advanced sharing settings'. The main content area displays network information for 'HU265991 (This computer)', including the domain 'howardu.net' and the Internet connection. Below this, there are sections for 'View your active networks' (showing 'howardu.net Domain network' with 'Access type: Internet' and 'Connections: Local Area Connection'), and 'Change your networking settings' with links for 'Set up a new connection or network', 'Connect to a network', 'Choose homegroup and sharing options', and 'Troubleshoot problems'. A 'See also' section at the bottom left lists 'HomeGroup', 'Internet Options', and 'Windows Firewall'.



Double Click on **Howard**

Recycle Bin
join.me

Adobe Reader XI

Google Chrome

Microsoft Office 2010



Mozilla Firefox

Control Panel > Network and Internet > Manage Wireless Networks

Manage wireless networks that use (Wireless Network Connection)

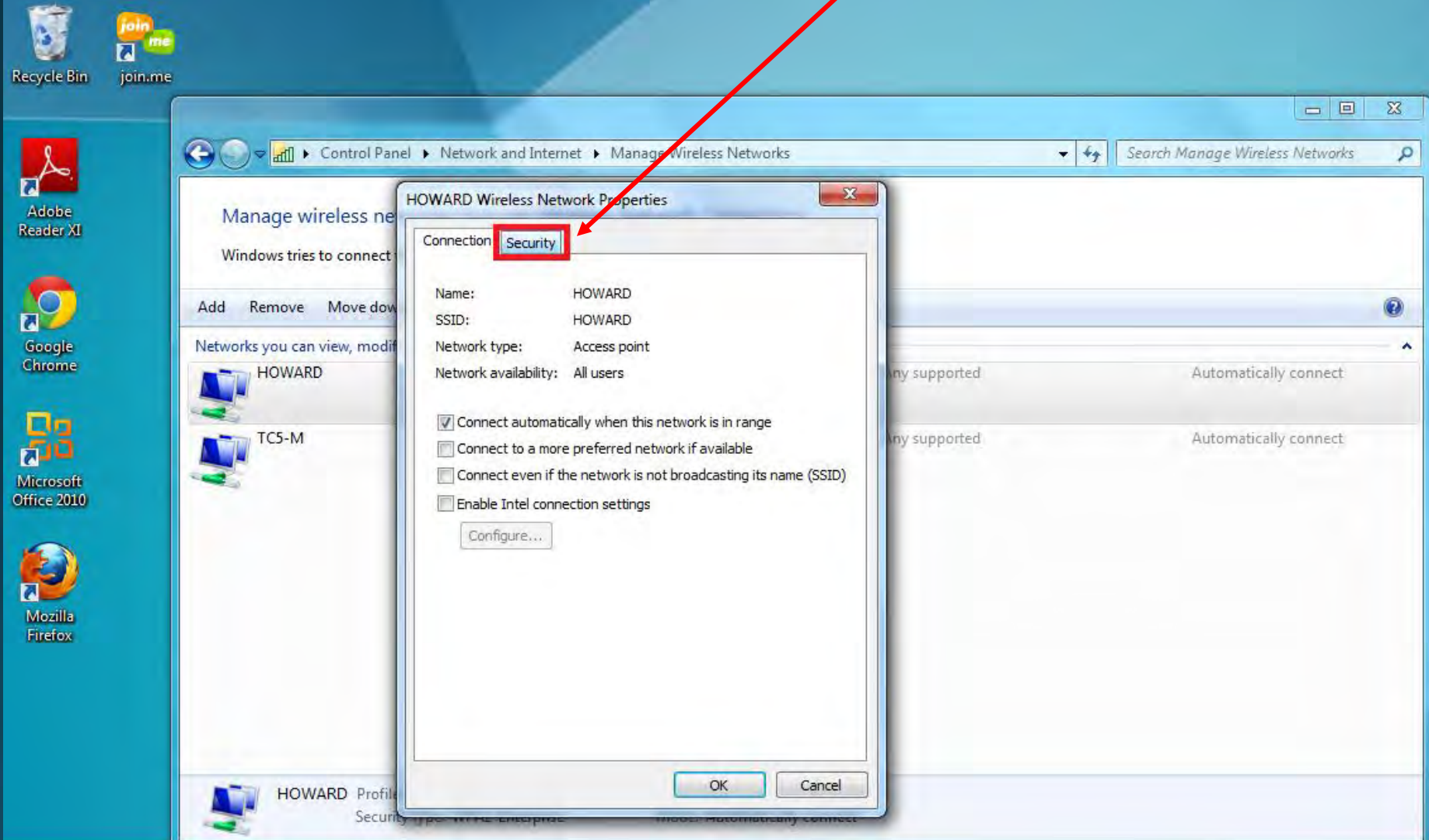
Windows tries to connect to these networks in the order listed below.

Add Remove Move down Adapter properties Profile types Network and Sharing Center

Networks you can view, modify, and reorder (2)			
	HOWARD	Security: WPA2-Enterprise	Type: Any supported
	TCS-M	Security: WPA2-Personal	Type: Any supported

HOWARD Profile name: HOWARD Radio type: Any supported
Security type: WPA2-Enterprise Mode: Automatically connect

Click the **Security Tab**



Set security type to: WPA2-Enterprise
Set encryption type to: AES



Control Panel > Network and Internet > Manage Wireless Networks

Search Manage Wireless Networks

Manage wireless networks

Windows tries to connect to the following wireless networks:

Add Remove Move down

Networks you can view, modify, or delete:

- HOWARD
- TCS-M

HOWARD Wireless Network Properties

Connection Security

Security type: WPA2-Enterprise

Encryption type: AES

Choose a network authentication method:

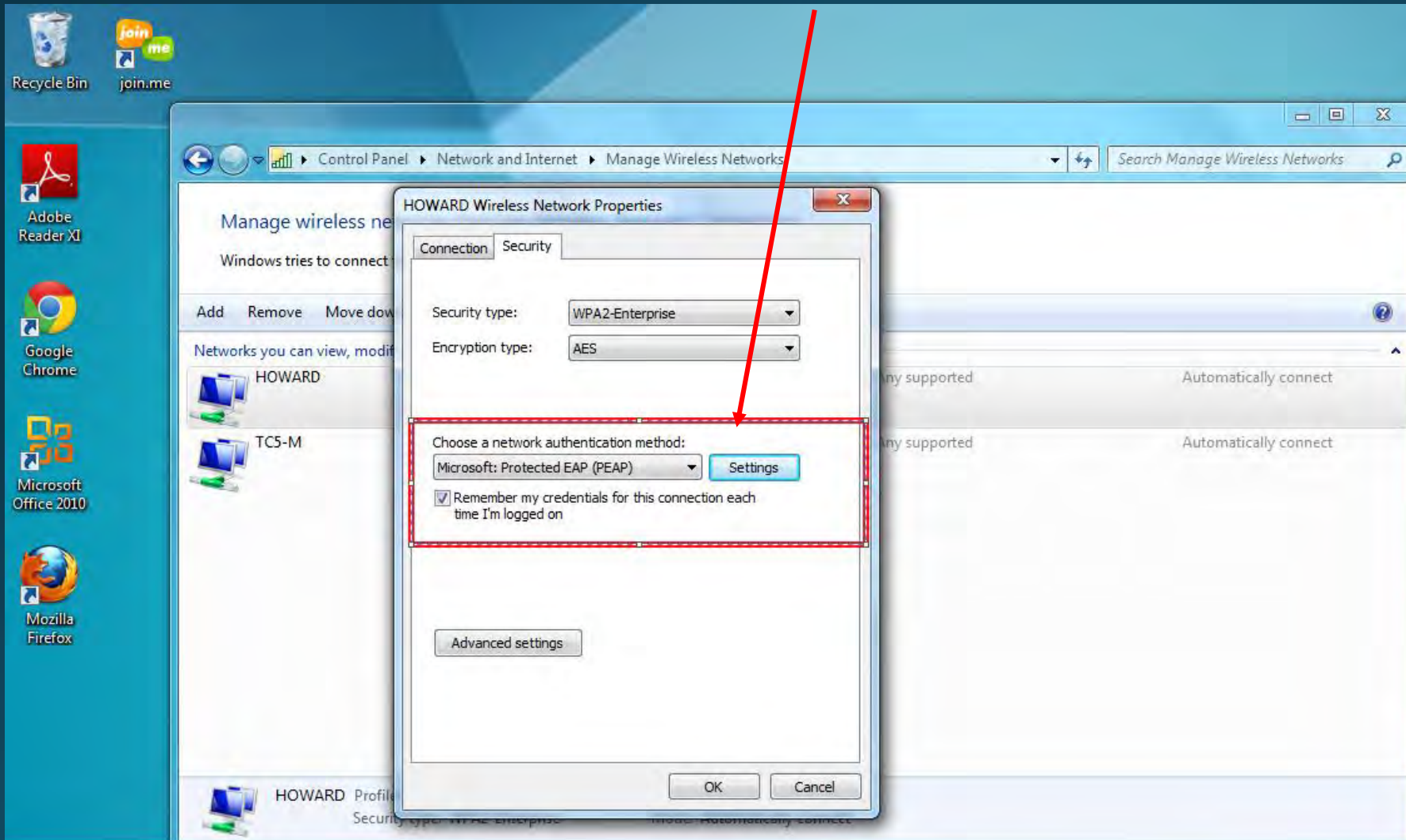
Microsoft: Protected EAP (PEAP) Settings

Remember my credentials for this connection each time I'm logged on

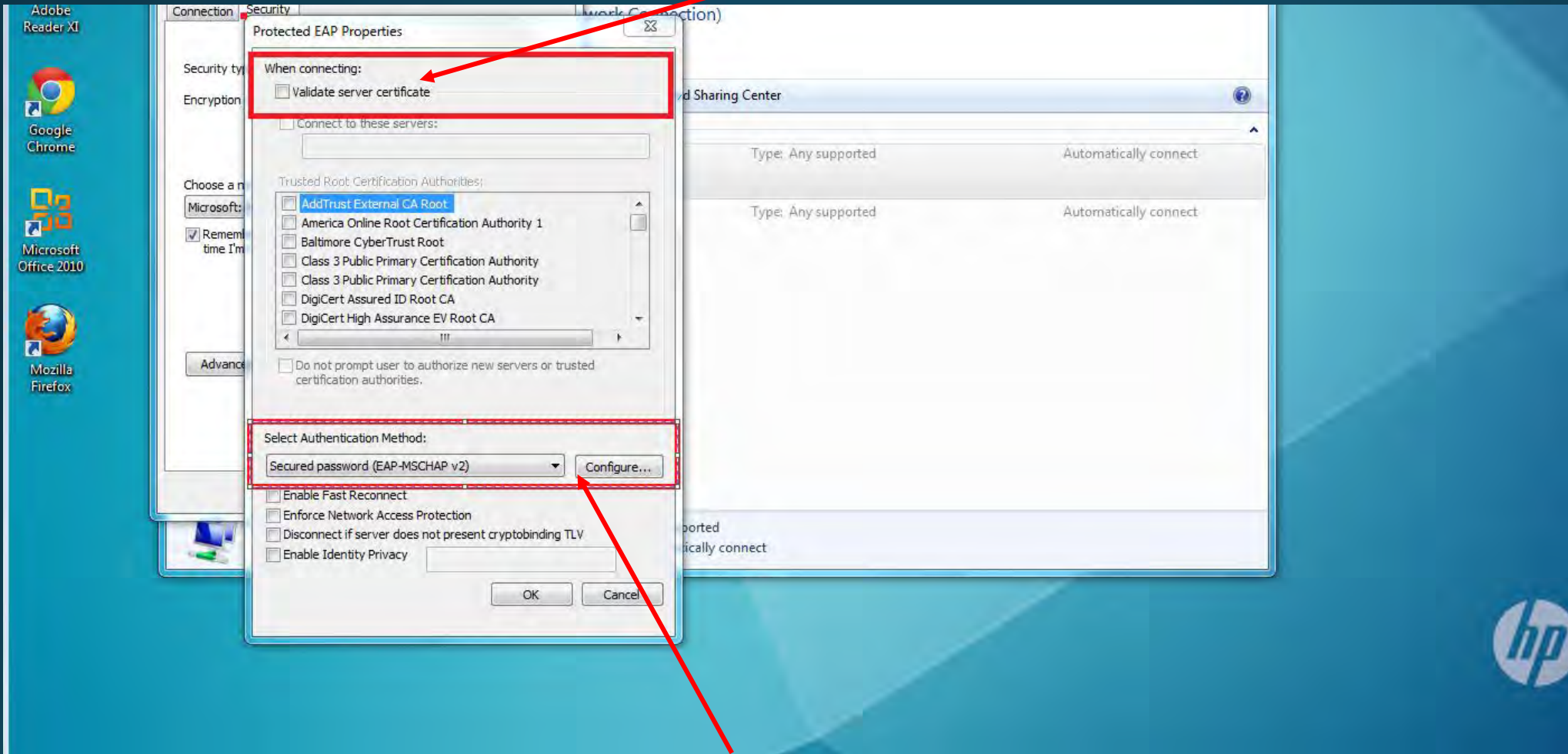
Advanced settings

OK Cancel

Set **network authentication method** to:
Microsoft Protected EAP (PEAP) and check the box below
Now, click on **settings**.

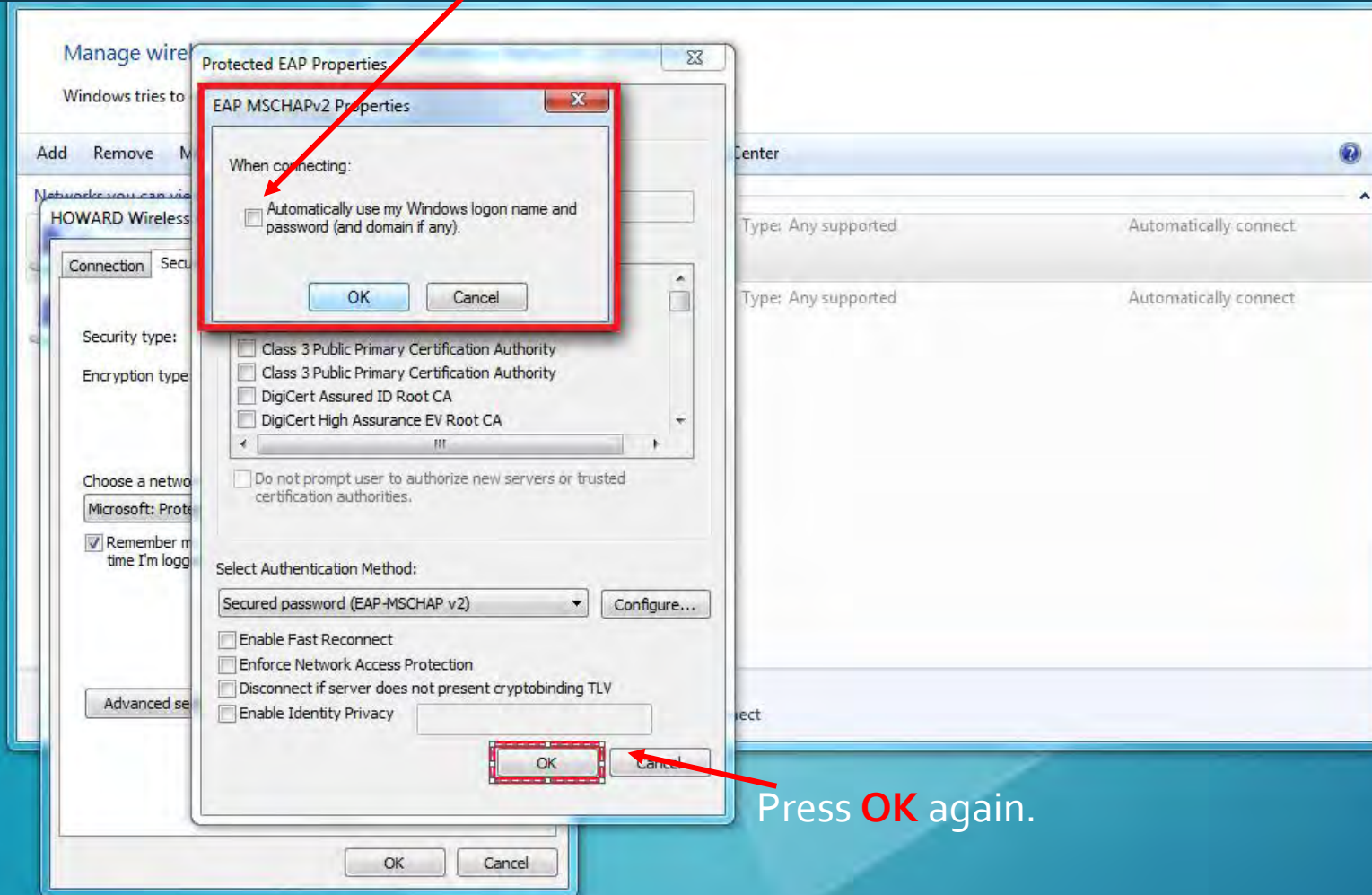


Uncheck the **validate server certificate** box.



Set **Authentication Method** to:
Secured password (EAP-MSCHAP v2)
Now click **configure**

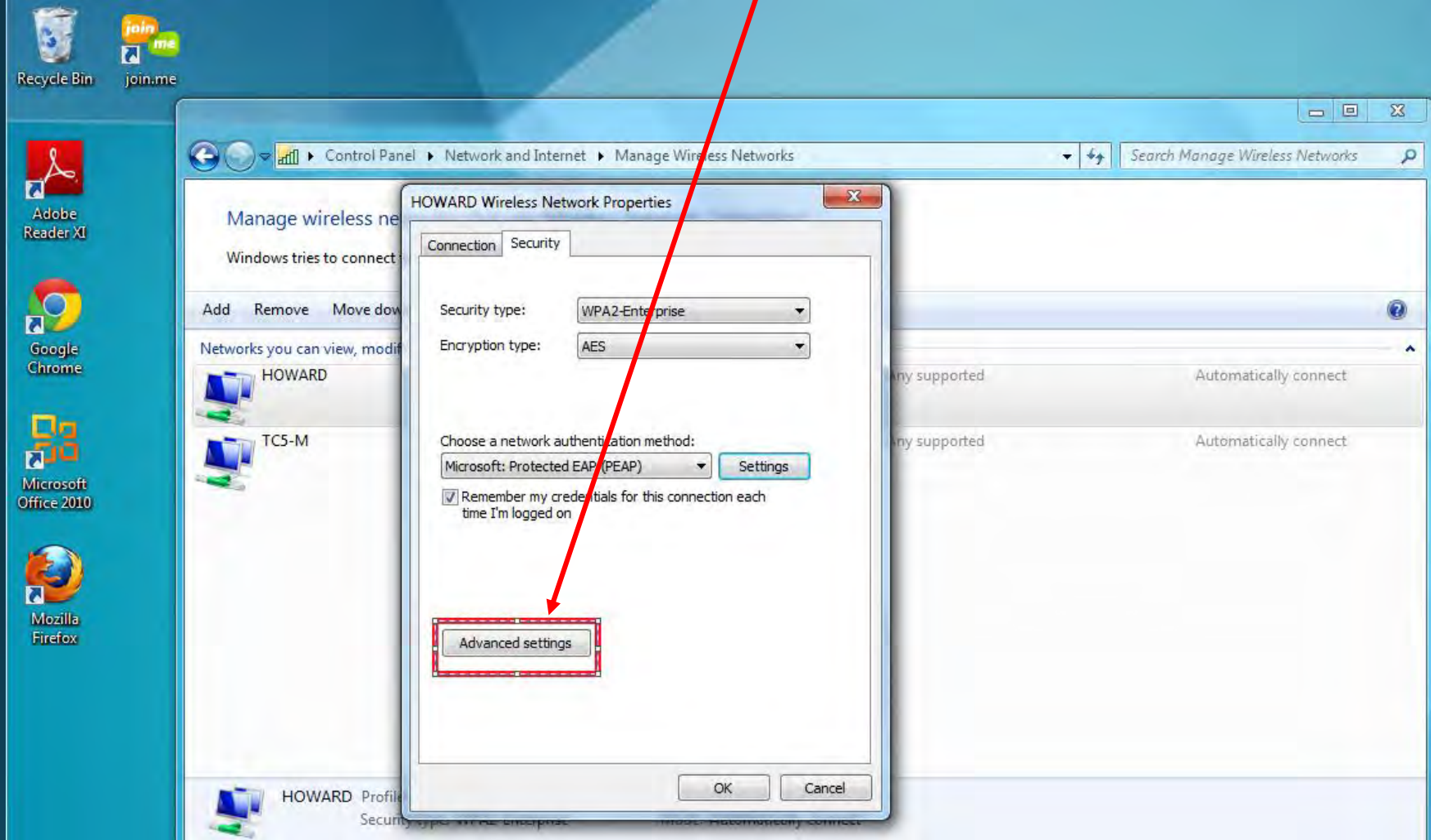
Make sure this box in the **EAP MSCHAPv2 Properties** is unchecked and click **OK**.



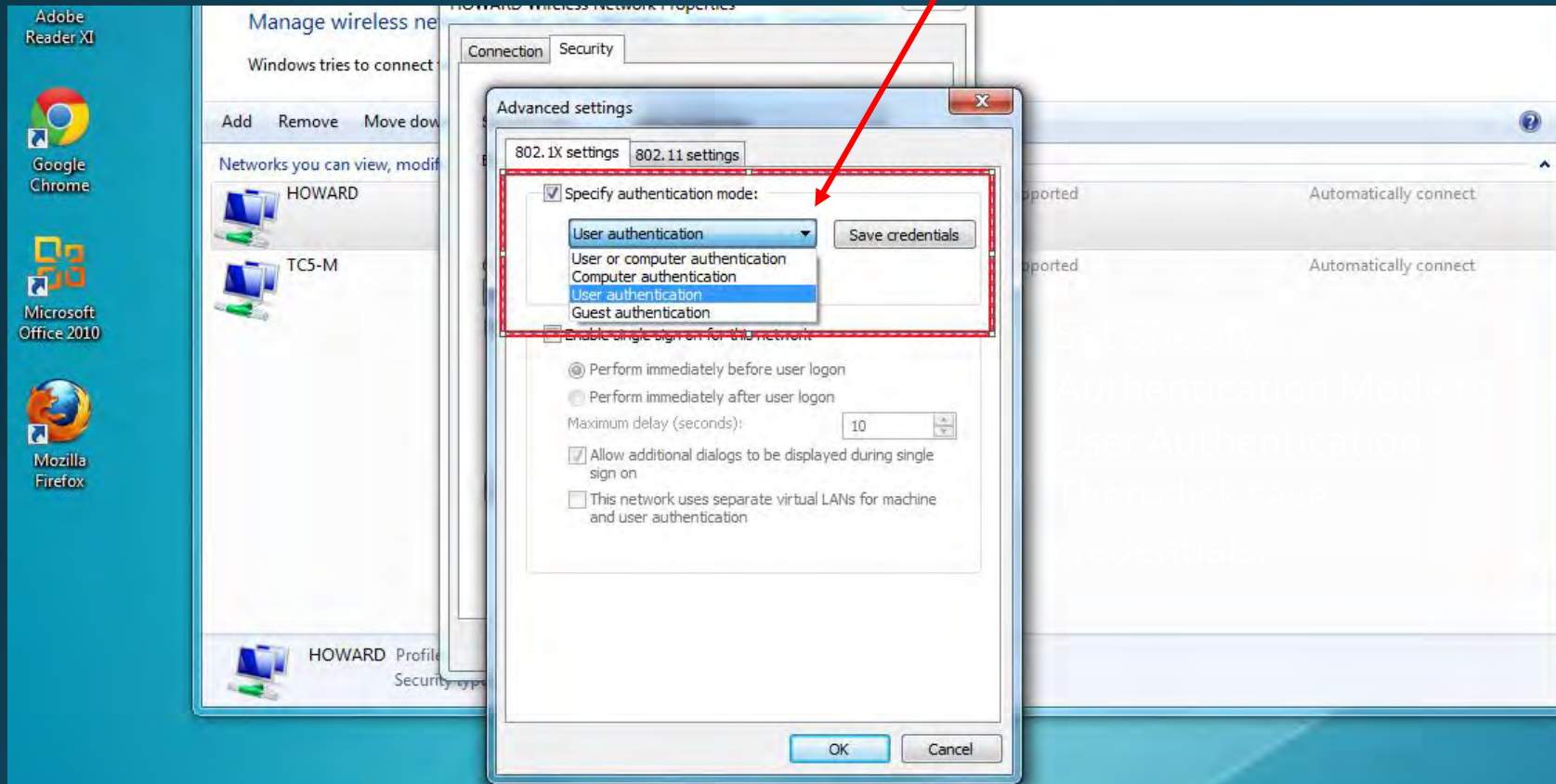
Press **OK** again.



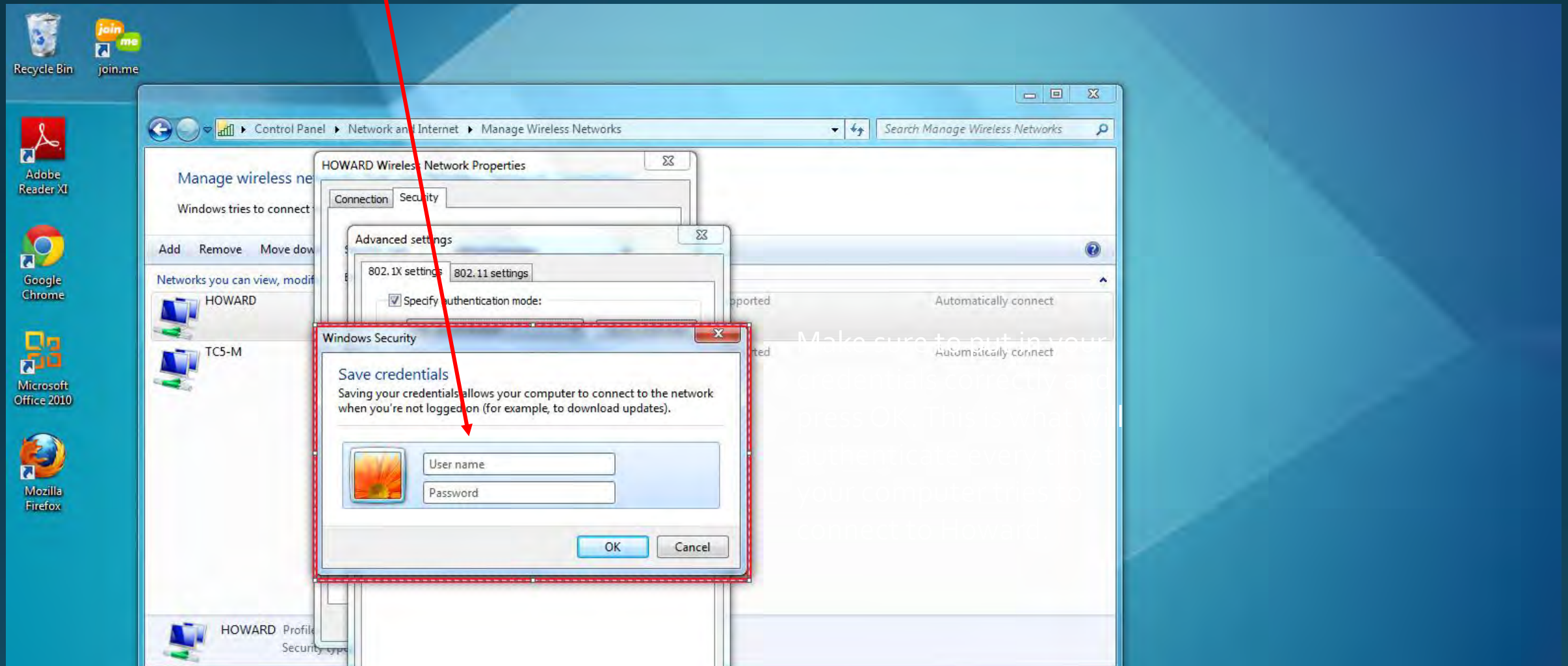
Now click on **Advanced Settings**



Make sure the box next to **Specify Authentication mode** is checked and set the option to **User Authentication**.



Make sure to type in your credentials correctly and press **OK**. This is what your computer will always try to authenticate with when it's in range of the HOWARD Network. You can close out of the remaining windows that are left open.



After saving your credentials, and closed all other network windows that were left open, and the wireless network was configured correctly, you will be connected.

